

Created August 21,2020

Pequea Valley School District COVID-19 Family Resource Packet

Dear Parent/Guardian:

We would like to take the time to thank you for your support throughout the summer. We are excited to welcome all of our learners and families back for the 2020-2021 school year. As we begin the 2020-2021 school year, we wanted to create a resource guide that would provide information to assist parents in understanding district procedures with COVID-19. As a district, we are following the recommendations of the Pennsylvania Department of Health (DOH), Pennsylvania Department of Education (PDE), and Center for Disease Control (CDC). We are also in consultation with Penn Medicine Lancaster General Health so that we have a local resource that understands the needs of Lancaster County.

Self-Monitoring: We are asking all families to self-monitor prior to coming to school. Please take your child’s temperature and review the below chart of symptoms. Our chart was created by LGH/Penn Medicine with guidance from the PA Department of Health.

If your child is experiencing **1 or more symptoms from Group A** or **2 or more symptoms from Group B**, please stay home for 24 hours and monitor symptoms. If symptoms continue please call your family physician. Please note that under our current school procedures a learner should stay home if experiencing a fever, diarrhea, and/or vomiting for 24 hours after symptoms subside. Please do not give fever-reducing medicine to send your child to school.

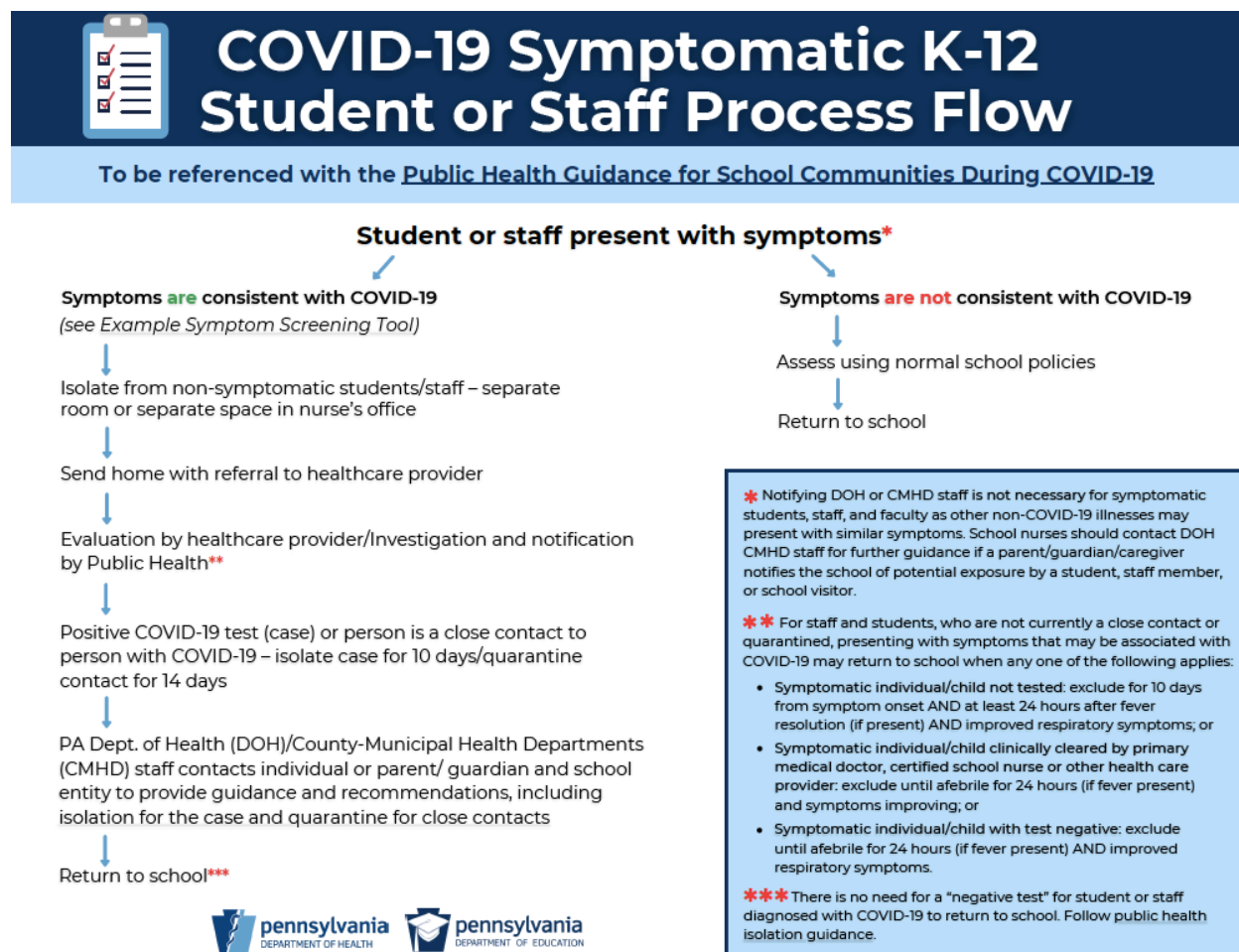
Group A	Group B
Cough * Shortness of Breath Difficulty Breathing New Loss of Smell New Loss of Taste	Fever (100 or higher) ** Chills Sudden Chills and Sweating (rigor) Muscle Pain (Myalgia) Headache Sore Throat Diarrhea ** Nausea or Vomiting ** Fatigue Runny nose and congestion
<ul style="list-style-type: none"> Some learners, such as those with asthma, may cough normally. A child should stay home if they have a persistent, different or new cough. 	** Please note that under our current school procedures a learner should stay home if experiencing a fever, diarrhea, vomiting for 24 hours after symptoms are gone. Please do not give fever-reducing medicine to send your child to school. These symptoms can be symptoms of COVID-19, but symptoms of other illnesses that can spread throughout school.

If a learner has the symptoms that are listed in the chart we will be asking a parent/guardian to pick their child up. The School Nurse will follow up with the parent the following day to check on symptoms and give further instructions for care.

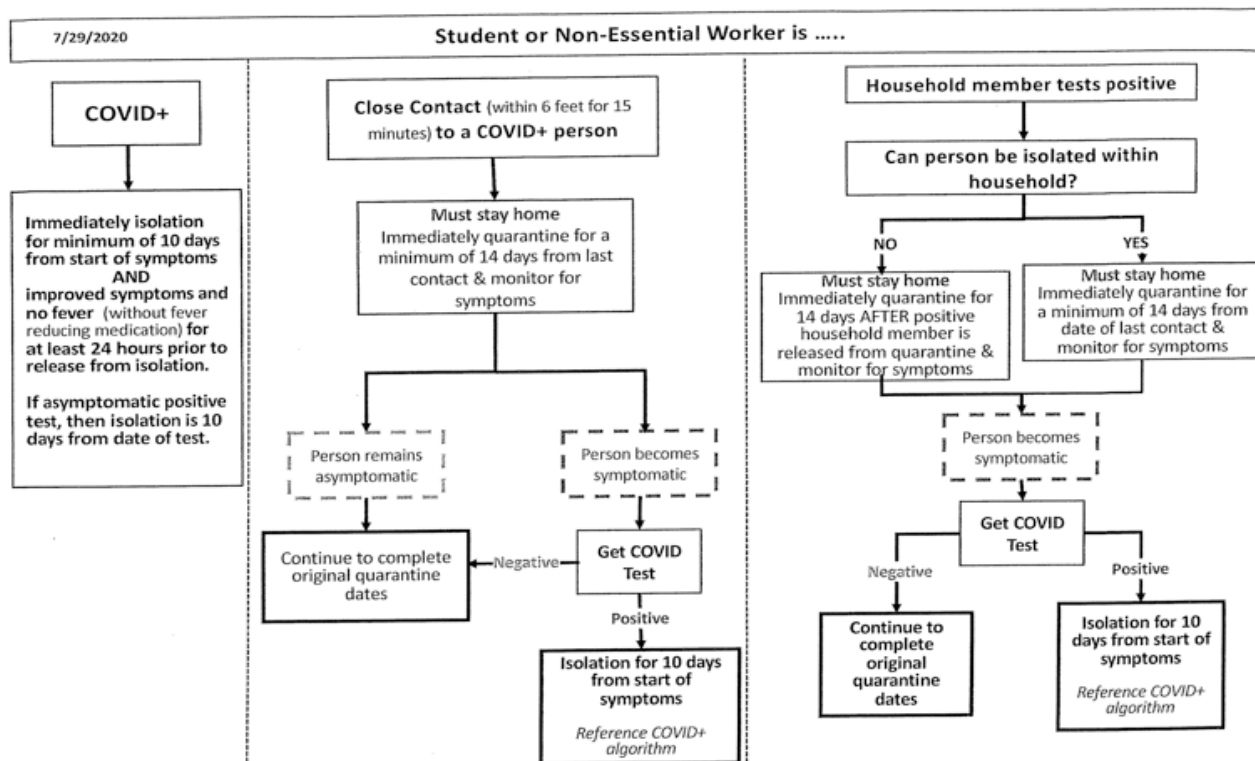
We will scan all staff and learners' temperatures as they enter the building with infrared cameras.

Symptom Flow Chart:

We will be working with the DOH when necessary, but it is not **necessary** to notify the DOH of every symptomatic student or staff member, since many non-COVID-19 illnesses may present with similar symptoms. We will contact the DOH for further guidance if a parent/guardian/caregiver notifies the school of potential exposure by a student or staff member.



Covid+ Case: Below is the flowchart that outlines the steps recommended for our district to take if a learner or staff tests positive for COVID-19. We will work with LGH/Penn Medicine and the Department of Health to support our families through this process. Please remember if a learner would need to be out for an extended amount of time we would switch them over to PV Online to continue their learning.



* Symptomatic students/staff should not report to school /work if they are ill, including having a COVID test pending for themselves.


**Consideration for COVID testing is based on symptoms and exposures.

Recommendation of a Change in Instructional Model: Pequea Valley administrative team will continue to monitor the incident rate and the percent positivity on a weekly basis to be able to plan for future changes to our plan. A county’s corresponding threshold may change week-by-week as incidence and percent positivity rates rise and fall. In order to confirm stability of county transmission, when a county’s corresponding threshold changes, school entities should wait to see the results from the next 7-day reporting period before considering a change to their instructional models. To ensure the most effective transition for our learners, it may be appropriate for a school to wait even longer, up to a full marking period, to transition to an instructional model that increases in-person instruction.

<https://www.education.pa.gov/Schools/safeschools/emergencyplanning/COVID-19/SchoolReopeningGuidance/ReopeningPreKto12/Pages/DeterminingInstructionalModels.asp>

X

Level of Community Transmission in the County	Incidence Rate per 100,000 Residents (Most Recent 7 Days)	AND/OR	PCR Percent Positivity (Most Recent 7 Days)	Recommended Instructional Models
Low	<10	AND	<5%	Full in-person Model OR Blended Learning Model
Moderate	10 to <100	OR	5% to <10%	Blended Learning Model OR Full Remote Learning Model
Substantial	≥100	OR	≥10%	Full Remote Learning Model




COVID-19 Early Warning Monitoring System Dashboard

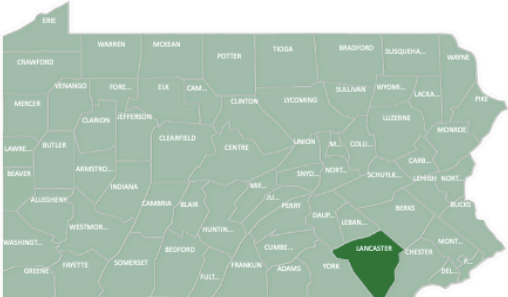
Updated on 8/14/2020

Select a county or multiple counties (CTRL+click) in the map to filter the table.

Page Navigation

All Counties ▼





Pennsylvania

+500 <small>Confirmed cases (diff)</small>	43.2 <small>Incidence rate per 100,000 (curr)</small>
4.0% <small>PCR percent positivity (curr)</small>	-32.7 <small>Avg. daily hospitalizations (diff)</small>
+3.1 <small>Avg. daily ventilators (diff)</small>	0.7% <small>Hosp visits due to CLI (curr)</small>

diff. - difference between the most recent 7-day period and the previous 7-day period.
curr. - most recent 7-day period

Most recent 7-day period: August 7-August 13
Previous 7-day period: July 31-August 6

For detailed county progress hover over the metric.

County	Difference in confirmed cases (most recent 7 days vs previous 7 days)	Incidence rate (most recent 7 days) per 100,000 residents	PCR percent positivity (most recent 7 days)	Difference in the average daily number of COVID-19 hospitalizations**	Difference in the average daily number of COVID-19 patients on ventilators**	Percent of hospital emergency department visits in the most recent 7 days due to COVID-like-illness*
LANCASTER	+28	58.7	4.5%	+5.0	+2.1	0.6%

Face Masks:

Pequea Valley School District wants to share information with our families as it relates to Face Coverings:

- All students must wear a face covering (*cloth mask or face shield*) that covers their nose and mouth inside the school at all times and while outside when physical distancing is not feasible.
- Children two years and older are required to wear a face-covering unless they have a medical or mental health condition or disability, documented in accordance with Section 504 of the Rehabilitation Act or IDEA, that precludes the wearing of a face covering in school.

We will be requiring all students who take part in the Traditional Model to wear a face-covering at all times while inside our school buildings when safe physical/social distancing (*six feet*) cannot be provided except for regular mask breaks; when eating or drinking; and/or when an exception is met and written documentation provided. We have worked hard to create six feet distancing in all of our classrooms and working with our facilitators to provide 10-minute mask breaks throughout the day. Masks are mandatory for the bus. Failure to wear a face-covering may necessitate a transfer to our PVSD Online model.

Requesting an Exemption:

1. Parent/Guardian submits a written request to the District for a Section 504 evaluation for their child. The request should be submitted to Cathy Koenig, Director of Student Services, at cathy_koenig@pequeavalley.org
2. Parent/Guardian must provide a doctor's note indicating diagnosis and suggested accommodations for their child (*i.e. no face covering*).
3. Meeting is held between the parent/guardian and the school district's Section 504 Team to determine the appropriate services, aides, and supports (*i.e. no face covering*).
4. Revisions to the student's individual Section 504 Plan can be made throughout the year.

Parents/Guardians do have the option to select one of the District's other two options (*PVOnline or PVV*) if they are opposed to their child wearing a face covering.

Traveling with Your Family:

Please remember when you are traveling it is necessary:

- During your trip, take steps to protect yourself and others from COVID-19:
- Wear a mask to keep your nose and mouth covered when in public settings.
- Avoid close contact by staying at least 6 feet (about 2 arms' length) from anyone who is not from your household.
- Wash your hands often or use hand sanitizer (with at least 60% alcohol).

Created August 21,2020

- Avoid contact with anyone who is sick
- Avoid touching your eyes, nose, and mouth.

Please remember that the DOH is recommending that if you have traveled, or plan to travel, to an area where there are high amounts of COVID-19 cases, it is recommended that you stay at home for 14 days upon return to Pennsylvania. If you travel to the following states, it is recommended that you quarantine for 14 days upon return:

<https://www.health.pa.gov/topics/disease/coronavirus/Pages/Travelers.aspx>

Pequea Valley School District knows that there are times when families need to travel, please monitor the list if you do have a family trip. Pequea Valley is not at this time making it mandatory to quarantine if traveling outside of Pennsylvania.

Other Reminder for our families:

- Please update your contact information in Sapphire.
- Please have a plan if your child needs picked up at school due to a call from the school's Nurse's Office. We are asking that ill children be picked up within the hour.
- Review good handwashing techniques, cough and sneezing etiquette with your child.
- If in elementary school, please have a change of clothing in child's backpack.
- Jackets and coats will not be loaned out this year. Make sure your child wears weather appropriate clothing.
- Keep vaccinations/immunizations up to date. Please call the school nurse with questions.
- Notify the building administration, school nurse or Cathy Koenig, Director of Student Services if your child or anyone in your family or recent contacts have been diagnosed with COVID.
- If your child needs an asthma inhaler, please provide a spacer.
- If a nebulizer is needed, the child must use at home; can return to school if used for a routine cause.
- If picking up a child being sent home by the nurse, do not come into the school; your child will be escorted to you in K-6 and given permission to walk out to your car 7-12.

Created August 21,2020

Please contact us if you have any questions or concerns:

Superintendent: Erik Orndorff erik_orndorff@pequeavalley.org

Safety and Health Plan/ Student Services : Cathy Koenig
Cathy_koenig@pequeavalley.org

Safety and Health Plan/ Support Services: Gavin Scalyer
gavin_scalyer@pequeavalley.org

Human Resources: John Bowden
John_bowden@pequeavalley.org

Academics/ Learning Platforms: Rich Eby
Rich_eby@pequeavalley.org

Technology: Ashley Rednak
Ashley_rednak@pequeavalley.org

Building Concerns:

John Trovato, Amy Koberstein,& Christy Collins (PVHS/PVIS)
John_trovato@pequeavalley.org
Amy_koberstein@pequeavalley.org
christy_collins@pequeavalley.org

Sheri McGowan (Salisbury)
Sheri_mcgowan@pequeavalley.org

Rich Eshe & Jodi Houck (Paradise)
Rick_eshe@pequeavalley.org
jodi_houck@pequeavalley.org

Certified School Nurse

Robin McCracken (Elementary) robin_mccracken@pequeavalley.org

Patty Shenk (Secondary)
Patty_shenk@pequeavalley.org

District Office : 717-768-5530
High School : 717-768-5500
PVIS 717-768-5535

Salisbury 717-442-8368
Paradise: 717-768-5560